



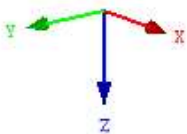
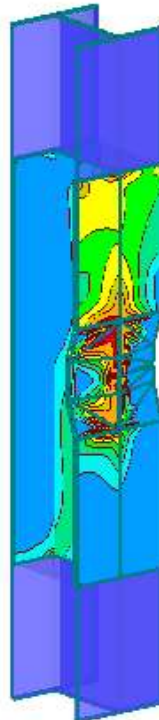
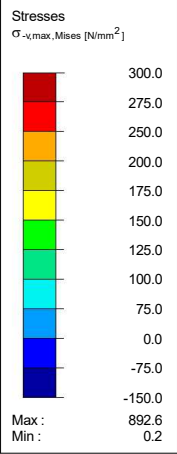
Project: Storage racking Model: Typical column damage_Case
Analysis of damage to racking columns Columns with varying degrees of damage

Date: 28/10/2024

■ **STRESSES** $\sigma_{eqv}, \text{Mises}, \text{Max}$

LC1 : Design load
Surfaces Stresses Sigma-eqv,Mises,max [N/mm²]

Isometric



Max Sigma-eqv,Mises,max: 892.6, Min Sigma-eqv,Mises,max: 0.2 N/mm²