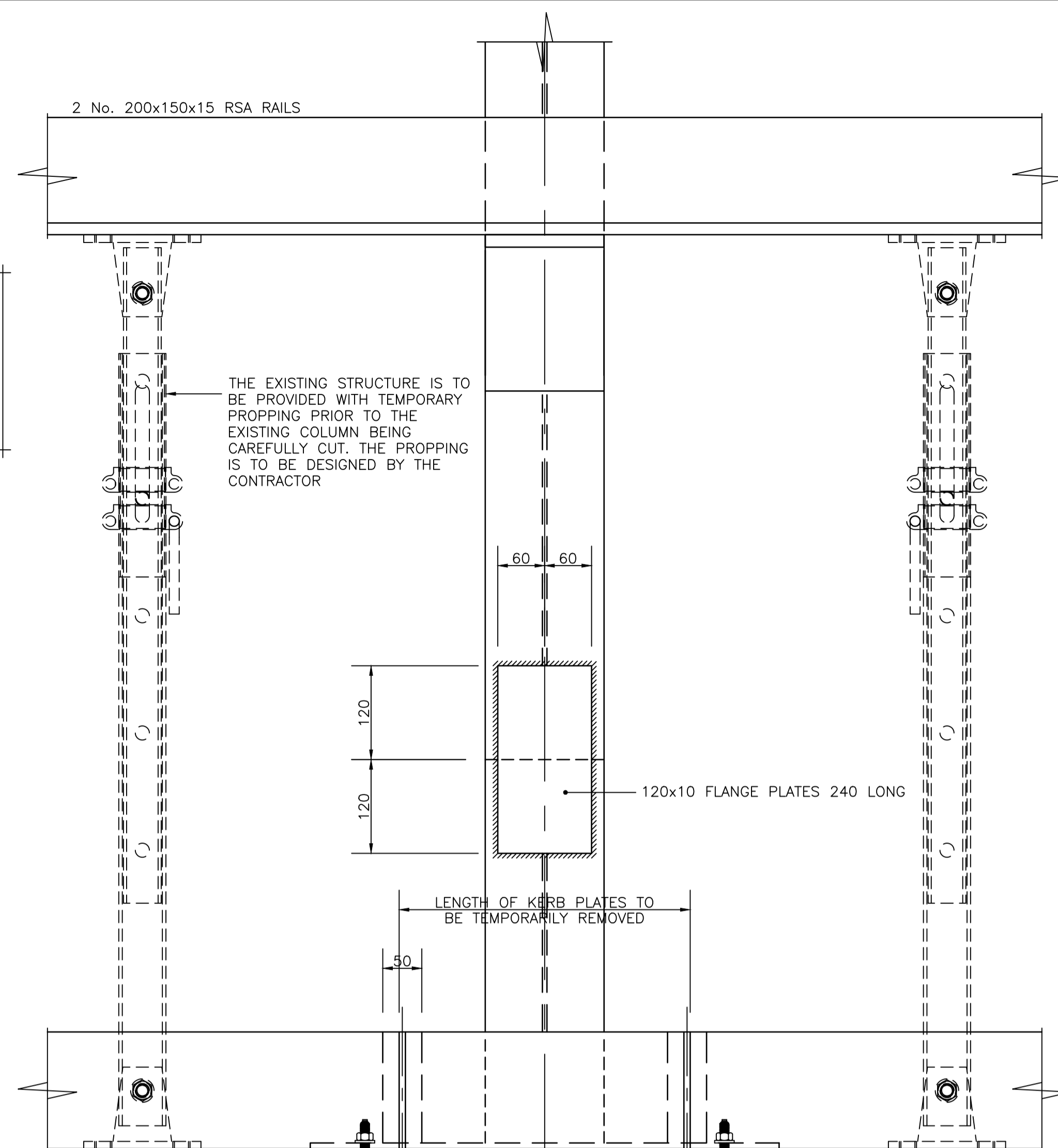
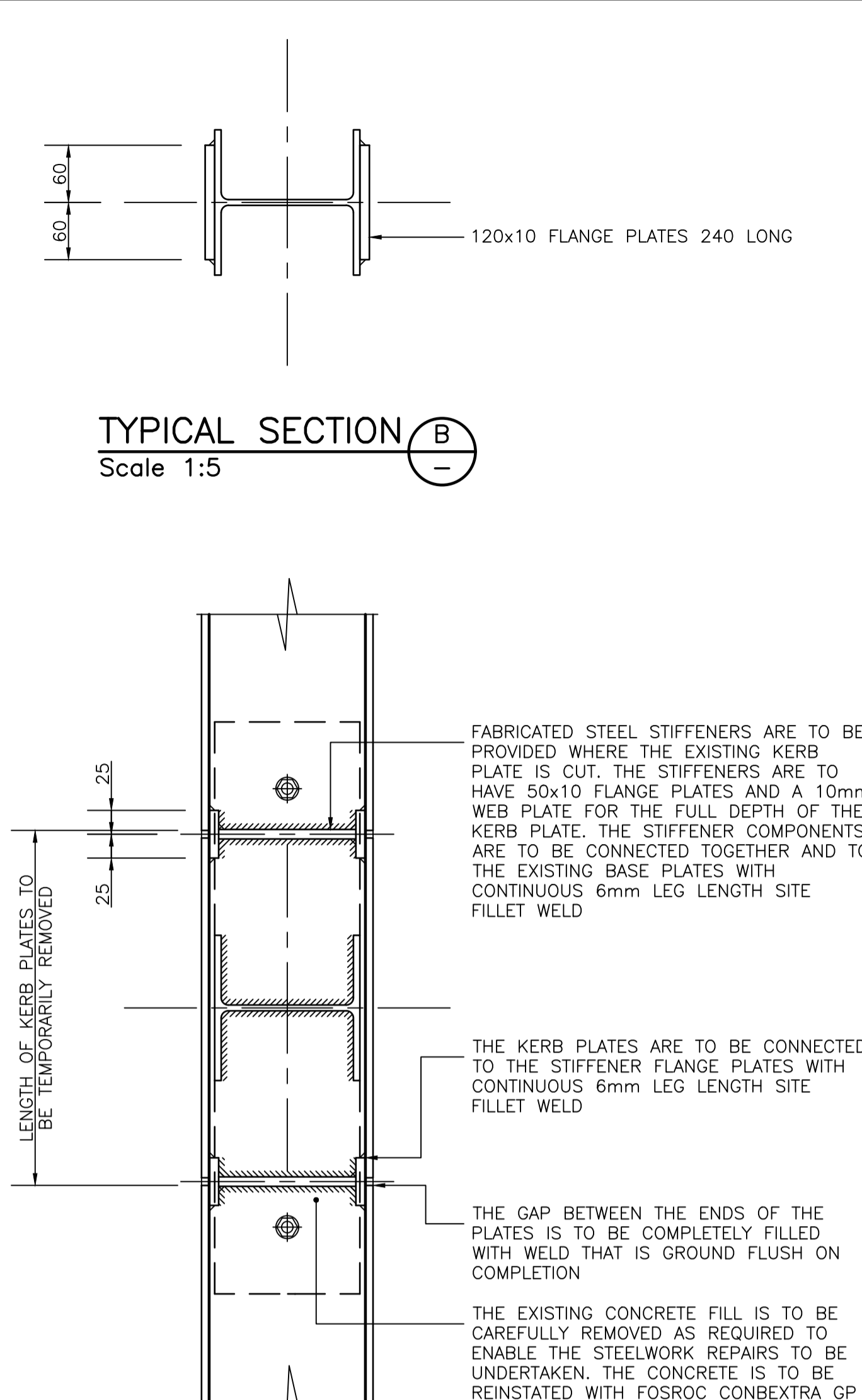


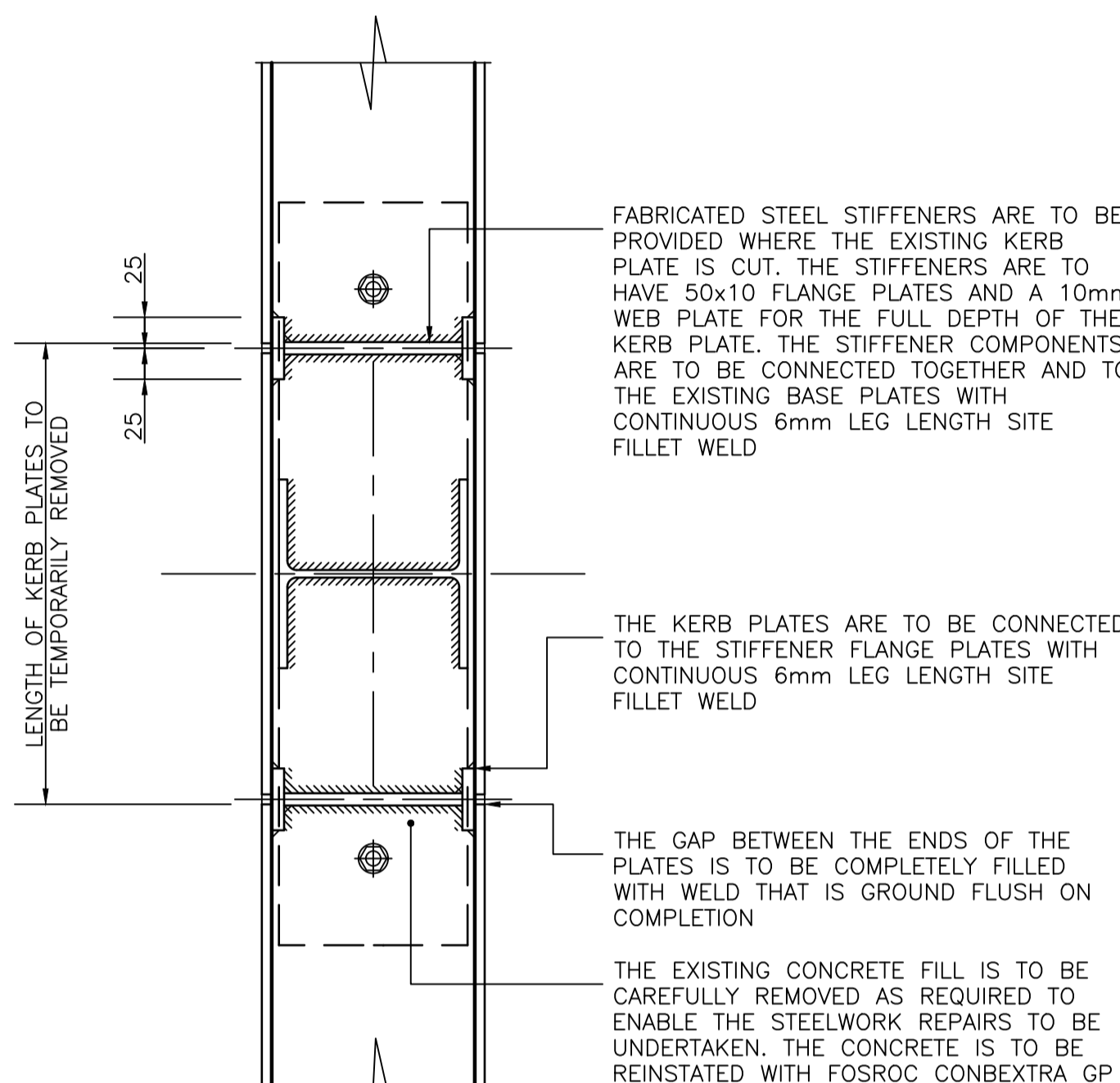
REPAIR TYPE 1 TYPICAL DETAIL
Scale 1:5



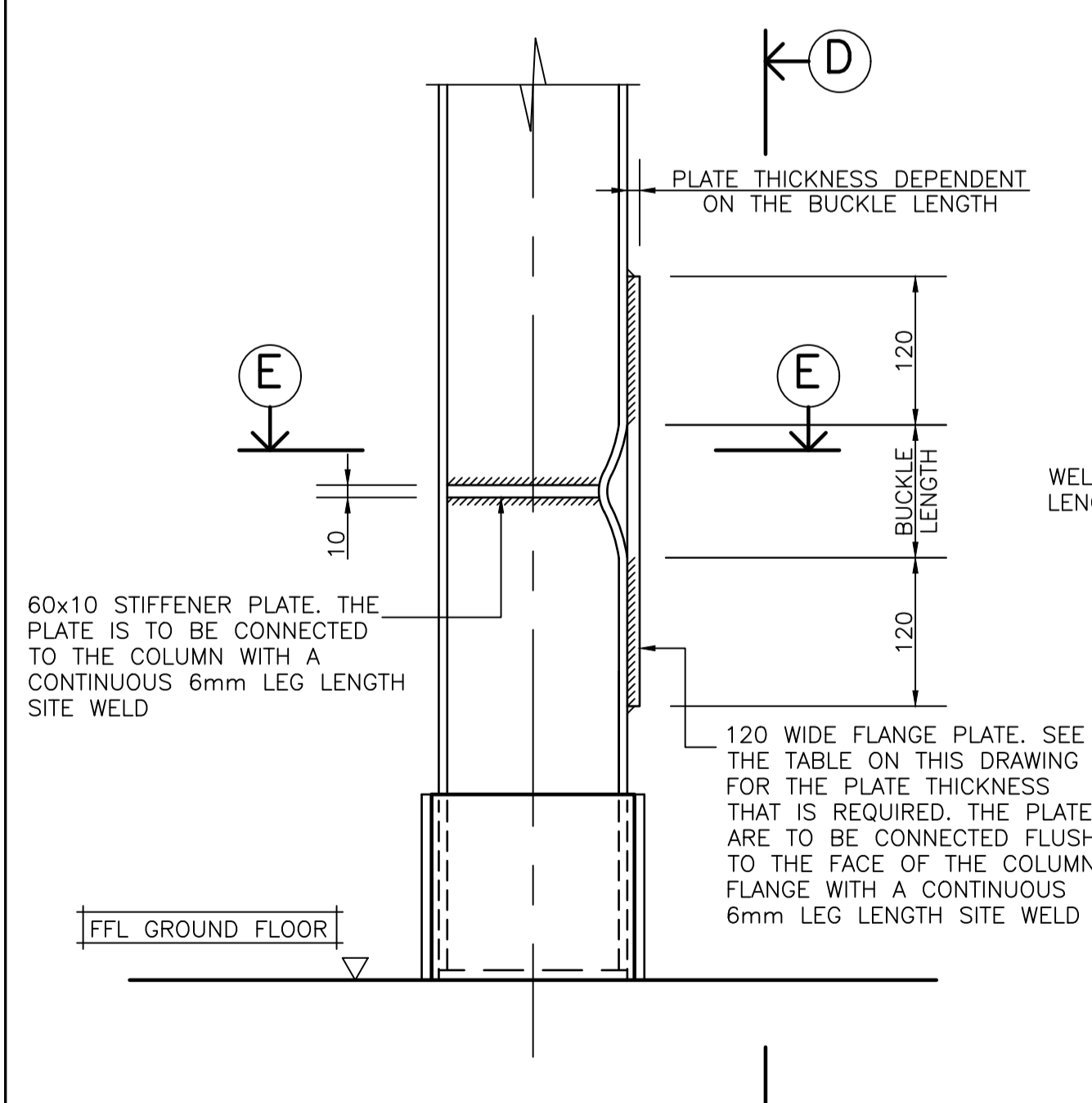
TYPICAL ELEVATION (A)
Scale 1:5



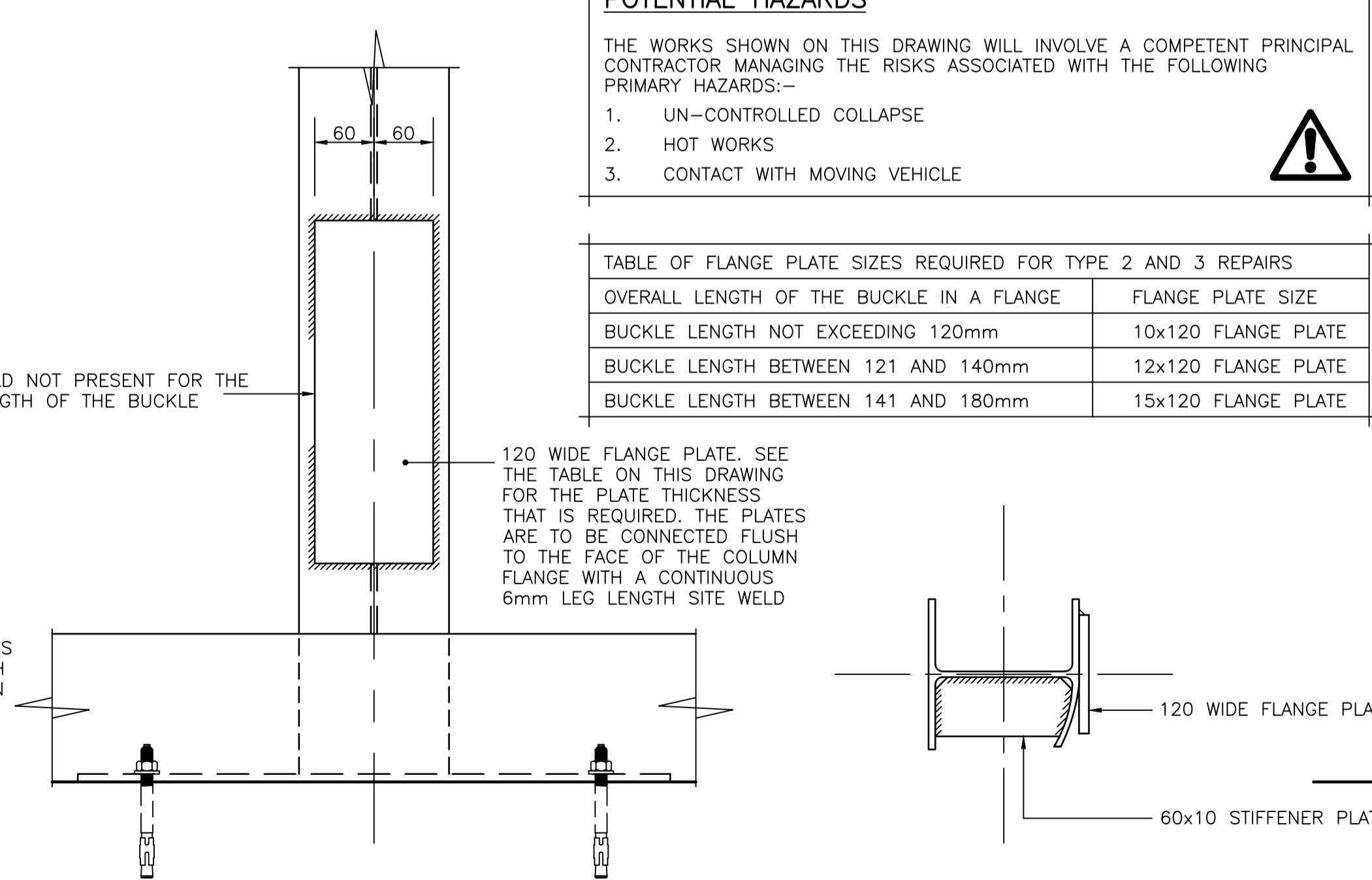
TYPICAL SECTION (B)
Scale 1:5



TYPICAL SECTION (C)
Scale 1:5



REPAIR TYPE 2 TYPICAL DETAIL
Scale 1:5



TYPICAL ELEVATION (D)
Scale 1:5

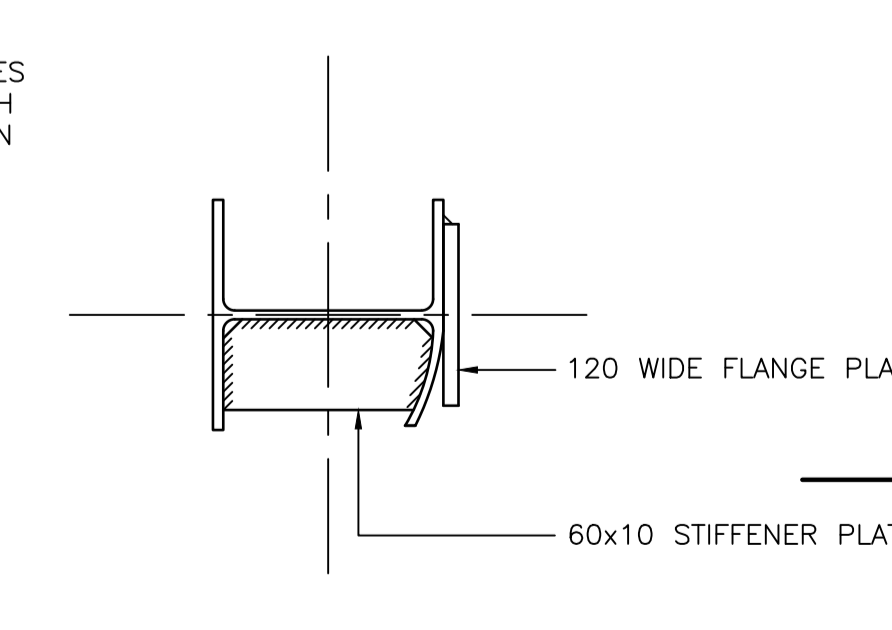
POTENTIAL HAZARDS

THE WORKS SHOWN ON THIS DRAWING WILL INVOLVE A COMPETENT PRINCIPAL CONTRACTOR MANAGING THE RISKS ASSOCIATED WITH THE FOLLOWING PRIMARY HAZARDS:-

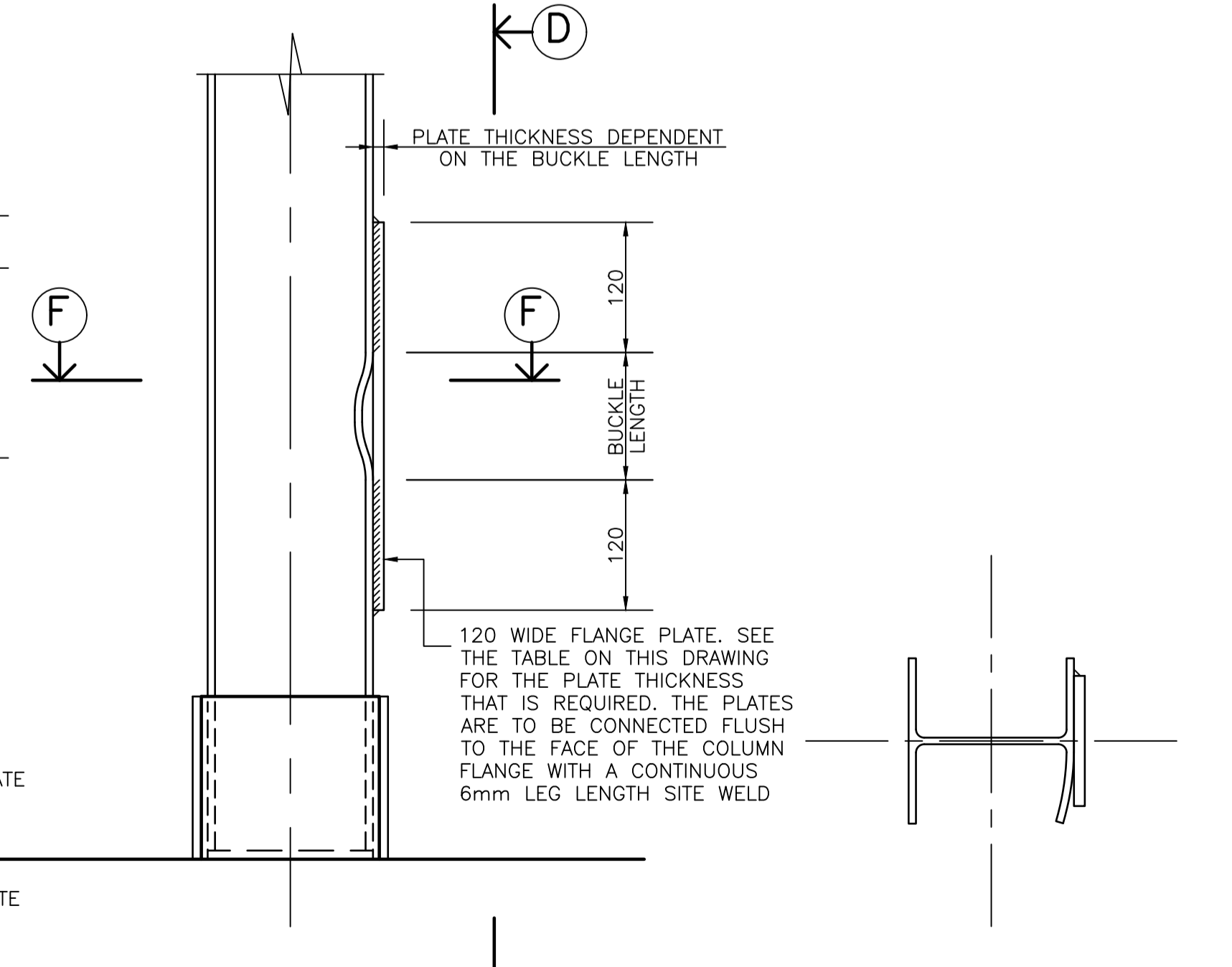
- UN-CONTROLLED COLLAPSE
- HOT WORKS
- CONTACT WITH MOVING VEHICLE

TABLE OF FLANGE PLATE SIZES REQUIRED FOR TYPE 2 AND 3 REPAIRS

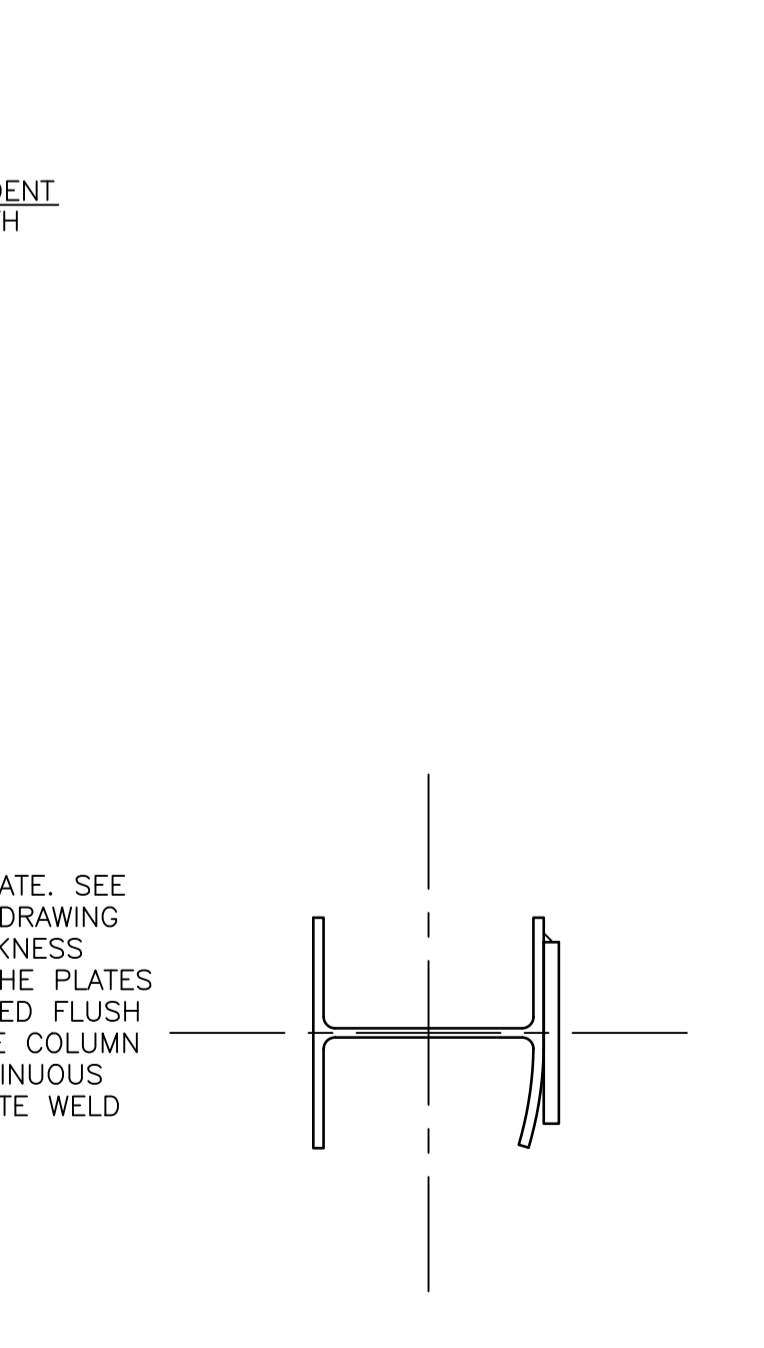
OVERALL LENGTH OF THE BUCKLE IN A FLANGE	FLANGE PLATE SIZE
BUCKLE LENGTH NOT EXCEEDING 120mm	10x120 FLANGE PLATE
BUCKLE LENGTH BETWEEN 121 AND 140mm	12x120 FLANGE PLATE
BUCKLE LENGTH BETWEEN 141 AND 180mm	15x120 FLANGE PLATE



TYPICAL SECTION (E)
Scale 1:5



REPAIR TYPE 3 TYPICAL DETAIL
Scale 1:5



TYPICAL SECTION (F)
Scale 1:5

NOTES

- THIS DRAWING IS TO BE READ IN CONJUNCTION WITH ALL OTHER RELEVANT SITE OPERATORS AND ENGINEERS DRAWINGS, DETAILS AND SPECIFICATIONS.
- THIS DRAWING MUST NOT BE SCALED.
- ALL DIMENSIONS ARE IN MILLIMETRES UNLESS NOTED OTHERWISE.
- ALL LEVELS ARE IN METRES UNLESS NOTED OTHERWISE.
- ALL DETAILS SHOWN FOR EXISTING STRUCTURE ARE SUBJECT TO CONFIRMATION ON SITE DURING THE COURSE OF THE WORKS. THE ENGINEERS ARE TO BE INFORMED OF ANY SIGNIFICANT VARIATIONS THAT ARE FOUND ON SITE FROM THE ASSUMED DETAILS SHOWN.
- ALL WORKS ARE TO BE UNDERTAKEN IN ACCORDANCE WITH THE BUILDING REGULATIONS AND THE LATEST BRITISH STANDARDS.
- THE EXECUTION CLASS FOR ALL WORKS IS TO BE CLASS 2 UNLESS NOTED OTHERWISE.
- ALL PROPRIETARY MATERIALS AND PRODUCTS ARE TO BE USED IN STRICT ACCORDANCE WITH THE MANUFACTURERS RECOMMENDATIONS.
- SECTION AND DETAIL REFERENCING SYSTEM
- ALL DEMOLITION WORK IS TO BE IN ACCORDANCE WITH BS 6187:2011 AND THE CONTRACTOR IS TO PROVIDE AND MAINTAIN ALL NECESSARY MEASURES TO PROTECT EXISTING AND ADJOINING BUILDINGS FROM DAMAGE AND PERSONS FROM INJURY.
- THE CONTRACTOR IS RESPONSIBLE FOR THE STABILITY OF THE STRUCTURE DURING THE COURSE OF THE WORKS AND IS TO DESIGN AND INSTALL ALL NECESSARY BRACING, SHORING AND PROPPING THAT IS REQUIRED. ALL TEMPORARY WORKS ARE TO BE IN ACCORDANCE WITH BS 5975:2019 AND HSE GUIDANCE DOCUMENT SIM 02/2010/04 AND THE CONTRACTOR IS TO APPOINT A TEMPORARY WORKS CO-ORDINATOR.
- ALL STRUCTURAL STEEL SECTIONS AND PLATES ARE TO BE GRADE S275 IN ACCORDANCE WITH BS EN 10025-2:2019 UNLESS NOTED OTHERWISE. ALL HOLLOW SECTIONS ARE TO BE HOT-FINISHED GRADE S355 NH IN ACCORDANCE WITH BS EN 10210-1:2006 AND BS EN 10210-2:2019 UNLESS NOTED OTHERWISE. ALL STEEL PRODUCTS SHALL HAVE TYPE 3.1 INSPECTION CERTIFICATES TO EN 10204:2004.
- ALL STEELWORK IS TO BE FABRICATED AND ERECTED IN ACCORDANCE WITH BS EN 1090-1:2009+A1:2011 AND BS EN 1090-2:2018. THE EXECUTION CLASS IS TO BE CLASS 2 UNLESS NOTED OTHERWISE.
- ALL SURFACES ARE TO BE FINISHED SMOOTH AND ALL SHARP EDGES MUST BE REMOVED.
- ALL WELDING IS TO BE IN ACCORDANCE WITH BS EN 1011-1:2009 AND BS EN 1011-2:2001 UNLESS NOTED OTHERWISE. ALL WELDING IS TO BE UNDERTAKEN BY WELDERS WITH VALID CERTIFICATION IN ACCORDANCE WITH BS EN ISO 9606-1:2017. ALL WELDS ARE TO BE CONTINUOUS 6mm LEG LENGTH FILLET WELDS UNLESS NOTED OTHERWISE. ALL BUTT WELDS ARE TO BE FULL STRENGTH WELDS.
- ALL STEELWORK IS TO BE MANUALLY CLEANED TO ST. 3 PREPARATION GRADE USING HAND AND POWER TOOLS IN ACCORDANCE WITH BS EN ISO 8503-1:2012 AND BS EN ISO 8503-3:2018. WELDED AREAS ARE TO HAVE ALL FLUX AND SPATTER REMOVED. SURFACES ARE TO BE VACUUMED CLEAN PRIOR TO PAINTING.
- GENERAL INTERNAL VISIBLE STEELWORK PAINTING SPECIFICATION

COATING LIFE	UP TO 25 YEARS
BS EN ISO 12944-2 CATEGORY	C3
HB ZINC PHOSPHATE EPOXY PRIMER	80µm SITE APPLIED
RECOATABLE POLYURETHANE FINISH	60µm SITE

- ALL PAINTS ARE TO BE USED IN ACCORDANCE WITH BS EN ISO 12944 SERIES AND THE MANUFACTURERS RECOMMENDATIONS. ALL PAINTS ARE TO BE OBTAINED FROM A SINGLE MANUFACTURER. ALL PAINTS ARE TO COMPLY WITH THE VOC EMISSION LEGISLATION.

REV.	DESCRIPTION	CHKD.	DATE
RICHARD HERRMANN ASSOCIATES LTD			
Unit 14, Ramsay Court, Hinchbrook Business Park, Huntingdon, Cambs, PE29 6FY			
01480 455179 RHACONSULT.CO.UK			
CLIENT			
PROJECT			
REMEDIAL WORKS TO THE CURING RACKING SUPPORT COLUMNS			
DRAWING TITLE			
TYPICAL COLUMN REPAIR DETAILS			
DRAWING ISSUE STATUS			
PRELIMINARY	<input type="checkbox"/> INFORMATION	<input type="checkbox"/> APPROVAL	<input checked="" type="checkbox"/>
TENDER	<input type="checkbox"/> CONSTRUCTION	<input type="checkbox"/> RECORD	<input type="checkbox"/>
PRE-TENDER C.D.M. CHECK	ISSUE TO H&S FILE		
DRAWN MAB	CHKD. RP	APPRVD. RP	
A1 SCALE 1:5	DATE 3.10.24		
DRAWING No. M117.18/3	REVISION -		

Richard Herrmann Associates Ltd. owns the copyright of this drawing, which must not be reproduced in whole or part without the written permission of Richard Herrmann Associates Ltd.